



Mintz Holdings, LLC

Sample 825-070825-020

Chocolate Cone

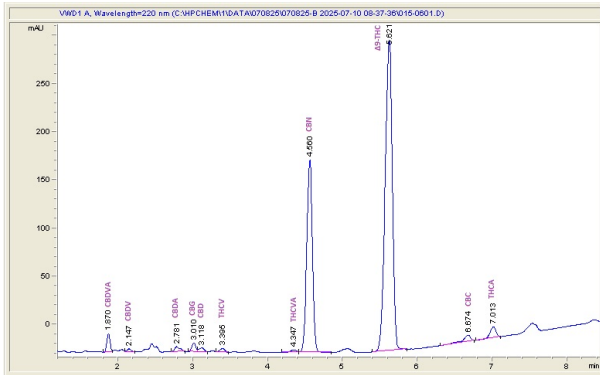
Sample Submitted: 07-08-2025; Report Date: 07-15-2025

Sample Unit Size: 4.25 g

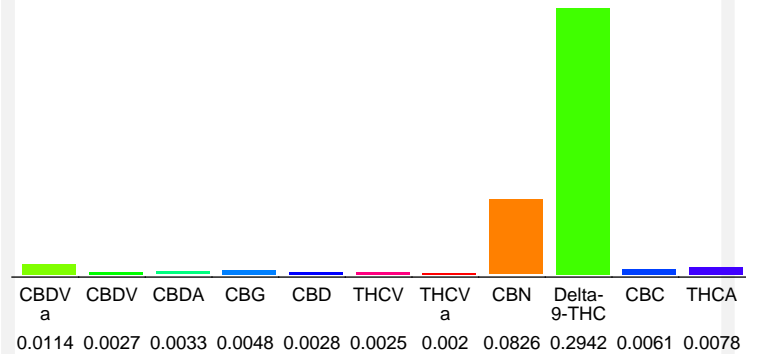
# Chocolate Cone

Edible

## Chromatogram



## Cannabinoid Profile



## Cannabinoid Profile by HPLC

**0.29%**  
Delta-9-THC

**0.00%**  
CBD

**0.42%**  
Total Cannabinoids

| Cannabinoid | % wt   | mg/unit |
|-------------|--------|---------|
| CBDVa       | 0.0114 | 0.4845  |
| CBDV        | 0.0027 | 0.1148  |
| CBDA        | 0.0033 | 0.1402  |
| CBG         | 0.0048 | 0.204   |
| CBD         | 0.0028 | 0.119   |
| THCV        | 0.0025 | 0.1063  |
| THCVa       | 0.002  | 0.085   |
| CBN         | 0.0826 | 3.511   |
| Delta-9-THC | 0.2942 | 12.5    |
| CBC         | 0.0061 | 0.2593  |
| THCA        | 0.0078 | 0.3315  |

|                             |             |              |
|-----------------------------|-------------|--------------|
| <b>Total Cannabinoids</b>   | <b>0.42</b> | <b>17.9</b>  |
| <b>Calculated Total THC</b> | <b>0.30</b> | <b>12.79</b> |
| <b>Calculated CBD Yield</b> | <b>0.01</b> | <b>0.24</b>  |

Calculated Total THC = Delta-9-THC + 0.877 \* THCA

Calculated Maximum CBD Yield = CBD + 0.877 \* CBDA

**Marin Analytics, LLC**  
250 Bel Marin Keys Blvd, Suite D4  
Novato, CA 94949

833-321-TEST / info@marinanalytics.com

**Mike Clemmons**  
Lab Manager